



## Full Width Temple for Sulzer Projectile Loom

Hunziker AG  
8630 Rütli / Schweiz  
Tel. +41 55 240 53 54  
Fax +41 55 240 48 44  
Email: sales@hunziker-ruti.ch

### Instruction for mounting

- The mounting must be carried out by a qualified person

### **Preparation of the full width temple**

- Please unwrap the parts carefully.
- Check the parts according to the delivery note.
- Take off the screws which connect the upper and lower profile.
- Separate the 2 Profile parts.
- Check the parts regarding quality and the kind of rod; rod with thread or smooth.



**Picture 1**

14.10.2000



## Full Width Temple for Sulzer Projectile Loom

Hunziker AG  
8630 Rütli / Schweiz  
Tel. +41 55 240 53 54  
Fax +41 55 240 48 44  
Email: sales@hunziker-ruti.ch

### Preparing the machine

- Wind off the warp in order to have no tension on the warp and cloth.
- Cut the fabric after the reed.  
**Attention:** cut with sufficient fabric length in order to be able to knot and to restart weaving.
- Put the fabric back over the head frames.
- Take the existing temple equipment off. See as well Sulzer-catalog no. 3, Section temples 33/01/0.
- Take off the full width bar.
- Take off all the screws which are not needed so they do not obstruct the fabric passing.
- Turn the loom in the totally back position..



**Picture 2**



## Full Width Temple for Sulzer Projectile Loom

Hunziker AG  
8630 Rütli / Schweiz  
Tel. +41 55 240 53 54  
Fax +41 55 240 48 44  
Email: sales@hunziker-ruti.ch

- Unscrew the crews for the supports. **(See picture 2 and 3)**



**Picture 3**

14.10.2000



## Full Width Temple for Sulzer Projectile Loom

Hunziker AG  
8630 Rütli / Schweiz  
Tel. +41 55 240 53 54  
Fax +41 55 240 48 44  
Email: sales@hunziker-ruti.ch



**Picture 4**

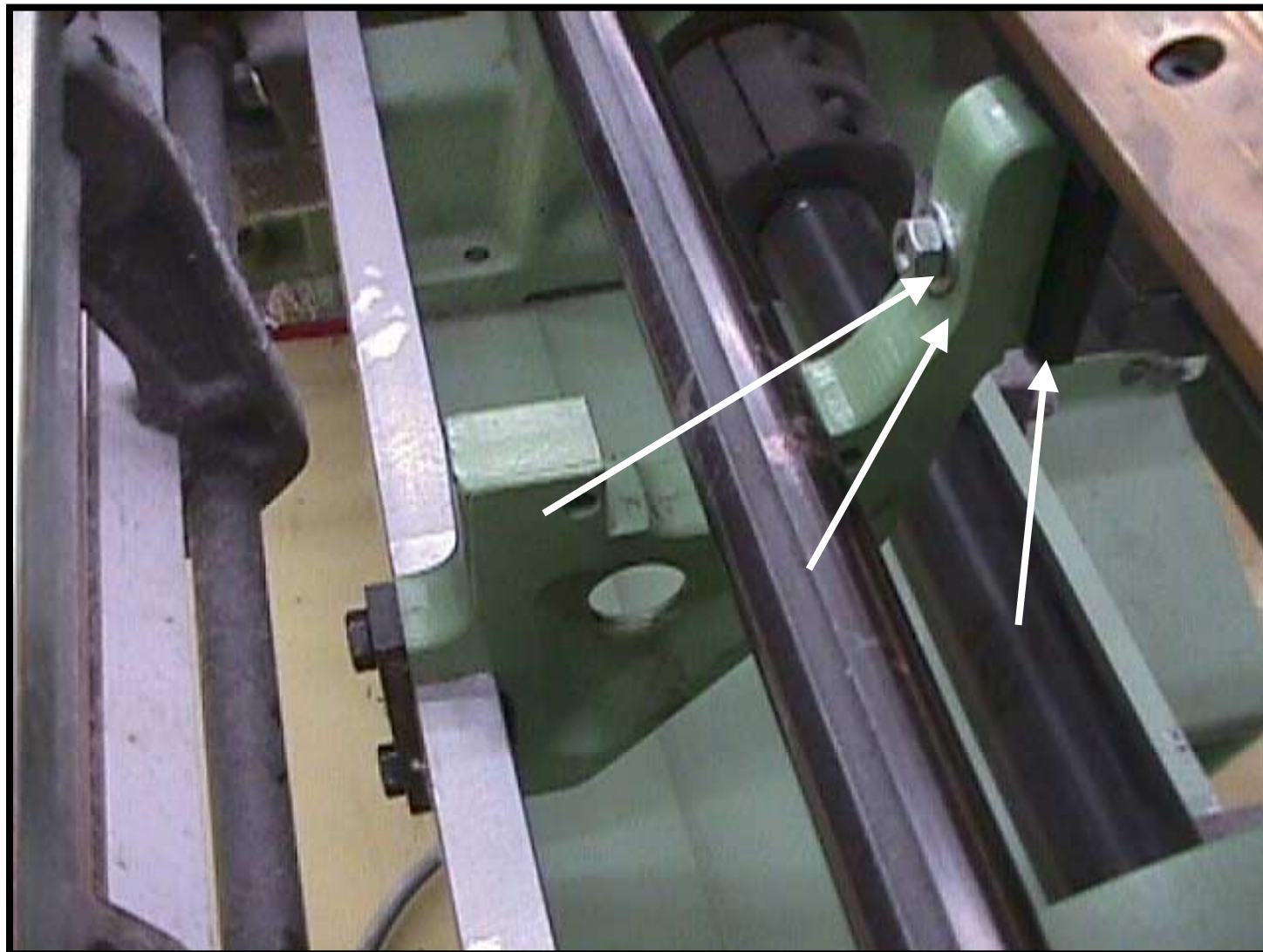
14.10.2000



## Full Width Temple for Sulzer Projectile Loom

Hunziker AG  
8630 Rütli / Schweiz  
Tel. +41 55 240 53 54  
Fax +41 55 240 48 44  
Email: sales@hunziker-ruti.ch

- Connect the full width temple supports with the supports in / of the machine. For an proper connection and good fitting do use the existing washer and or the supplied washers with the full width temple. **(See picture 2 + 3)**. A perfect positioning is important as the screws are tightened with 45 Nm.
- Take off the bar for putting the machine into operation.



**Picture 5**

14.10.2000



## Full Width Temple for Sulzer Projectile Loom

Hunziker AG  
8630 Rütli / Schweiz  
Tel. +41 55 240 53 54  
Fax +41 55 240 48 44  
Email: sales@hunziker-ruti.ch

### Mounting

- Put the lower profile into the machine and connect it with the supports.
- Just screw the screws in without tightening them.



Picture 6



## Full Width Temple for Sulzer Projectile Loom

Hunziker AG  
8630 Rütli / Schweiz  
Tel. +41 55 240 53 54  
Fax +41 55 240 48 44  
Email: sales@hunziker-ruti.ch

- **Attention!** The distance between the insertion needle and the lower profile must be 0,5 – 1 mm . Turn the machine by hand and observe all moving parts. **(Picture 7).**
- Turn the machine in the very front position.



**Picture 7**

14.10.2000



## Full Width Temple for Sulzer Projectile Loom

Hunziker AG  
8630 Rütli / Schweiz  
Tel. +41 55 240 53 54  
Fax +41 55 240 48 44  
Email: sales@hunziker-ruti.ch

- Check the shed level, please see **picture 9**, the distance must be 49 – 51 mm. Start with distance 51 mm and move till you get the space of 0.5 – 1.0 mm between lower profile and insertion needle see page 7. The distance 49 – 51 must be adjusted left and right as well as in the centre (**see as well picture picture 9**).



**Picture 8**

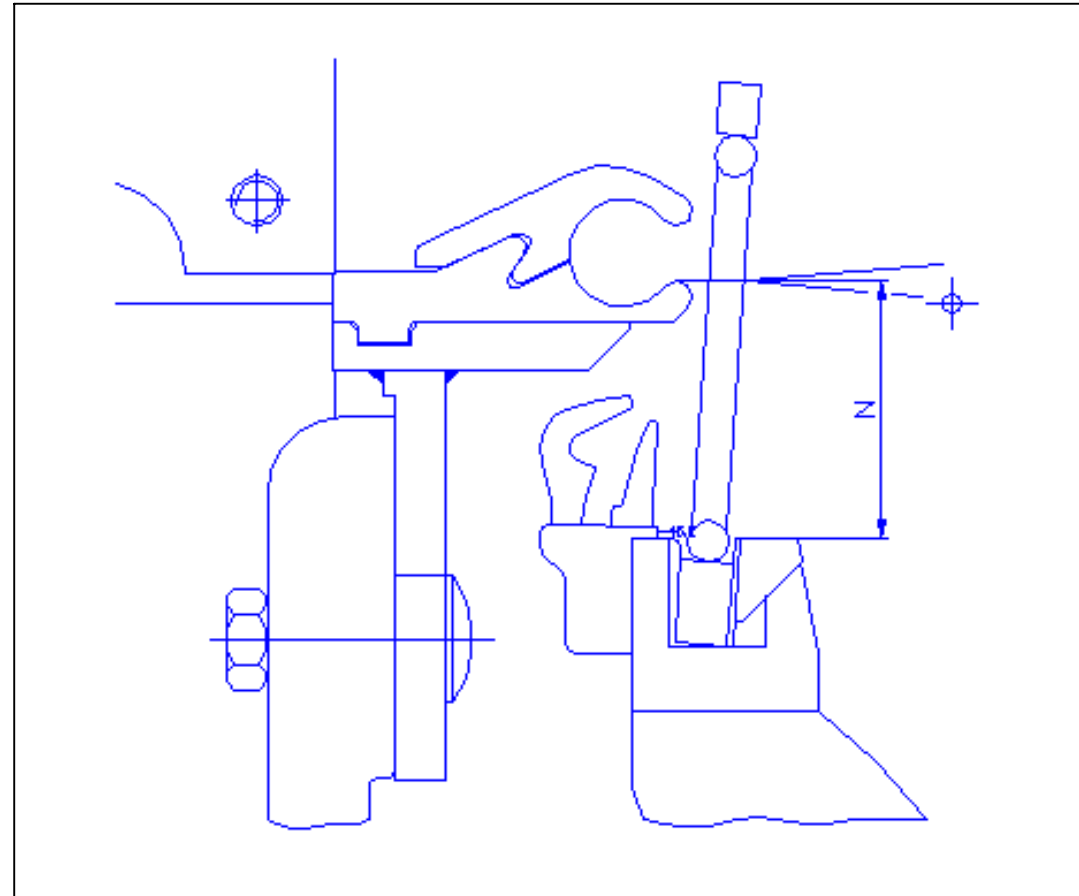
14.10.2000



## Full Width Temple for Sulzer Projectile Loom

Hunziker AG  
8630 Rütli / Schweiz  
Tel. +41 55 240 53 54  
Fax +41 55 240 48 44  
Email: sales@hunziker-ruti.ch

- N = 49-51 mm
- Check as well that the full width temple does not touch the guiding teeth nor the reed.



**Picture 9**



## Full Width Temple for Sulzer Projectile Loom

Hunziker AG  
8630 Rütli / Schweiz  
Tel. +41 55 240 53 54  
Fax +41 55 240 48 44  
Email: sales@hunziker-ruti.ch

- The distance between the weft clamping device and the full width temple must be 1 mm. (**Picture 10**).
- When everything is properly adjusted the screws must be tightened with about **45 Nm** (see pictures 2, 3, 4 and 5).



**Picture 10**

14.10.2000



## Full Width Temple for Sulzer Projectile Loom

Hunziker AG  
8630 Rütli / Schweiz  
Tel. +41 55 240 53 54  
Fax +41 55 240 48 44  
Email: sales@hunziker-ruti.ch

- Put the fabric over the lower profile.
- Put the rod on the fabric.
- Put the fabric around the rod (**Picture 11**).



**Picture 11**

14.10.2000



## Full Width Temple for Sulzer Projectile Loom

Hunziker AG  
8630 Rütli / Schweiz  
Tel. +41 55 240 53 54  
Fax +41 55 240 48 44  
Email: sales@hunziker-ruti.ch

- Mount the upper profile.
- Screw the screws in just by hand.



**Picture 12**

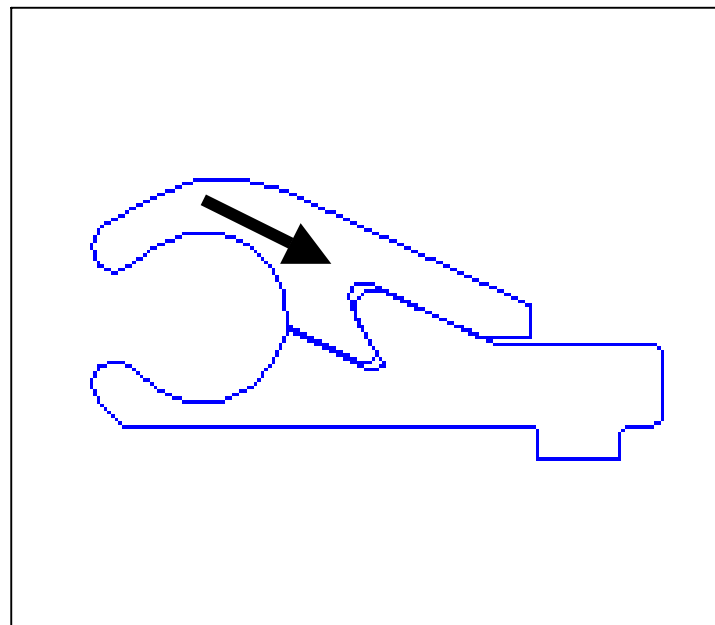
14.10.2000



## Full Width Temple for Sulzer Projectile Loom

Hunziker AG  
8630 Rütli / Schweiz  
Tel. +41 55 240 53 54  
Fax +41 55 240 48 44  
Email: sales@hunziker-ruti.ch

- **Attention** : Before tightening the crews press the upper profile into the angle of the lower profile.
- Tighten the screws.
- Tighten all screws with approx. **17 Nm**.



**Picture 13**



## Full Width Temple for Sulzer Projectile Loom

Hunziker AG  
8630 Rütli / Schweiz  
Tel. +41 55 240 53 54  
Fax +41 55 240 48 44  
Email: sales@hunziker-ruti.ch

Put the fabric over the full width temple and pull it through the cloth winding system as usually.

### ***Important:***

- Never hold the hands or any object between the reed and the full width temple.
- Start weaving just pick per pick and observe that the rod does move, rotate and that the fabric moves properly through the full width temple.
- If everything is correct then run the machine regularly
- **When using full width temple the warp tension can in most cases be reduced.**



**Picture 14**